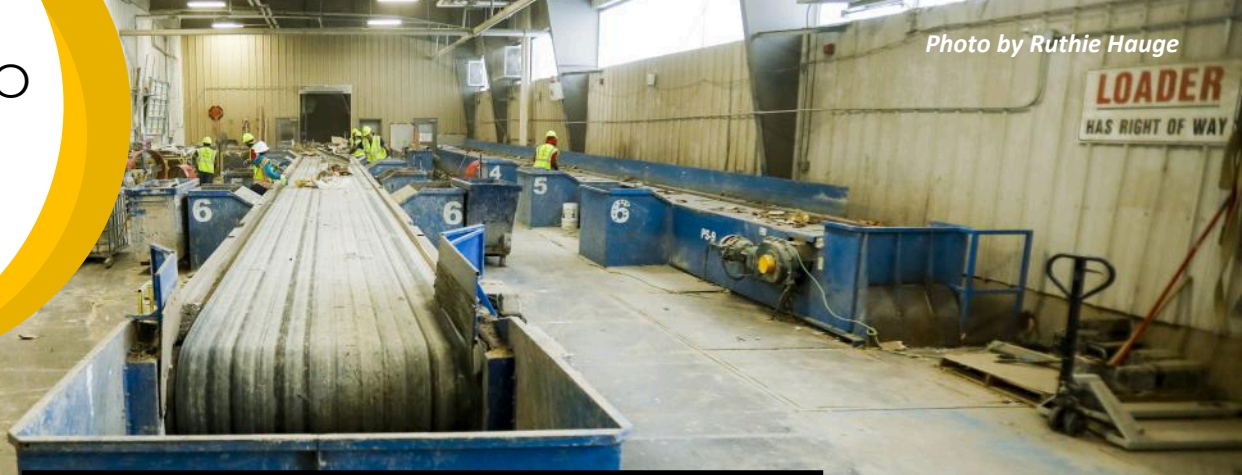


CONST & DEMO



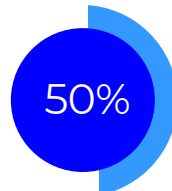
DANE COUNTY
Department of
Waste & Renewables

Photo by Ruthie Hauge



RECYCLABLE C&D

- Home Demolition
- New Residential/Commercial Construction Debris
- Clean Shingles- (Only Asphalt Shingles, Nails, & Tar Paper)
- Tires-No Rims
- Cardboard
- Aggregate
 - Concrete
 - Rock/Stone
 - Brick
 - Porcelain tile
- Wood*
 - Pallets
 - Dimensional Lumber
- Metal
 - Sheet Metal
 - Pipe
- Lamps
- Window Frames
- Wire



LOADS MUST CONTAIN AT LEAST 50% RECYCLABLE MATERIAL

** See reverse for details about dropping off branches and logs.*



LANDFILL DISPOSAL

- Railroad Ties
- Wood with metal attached
- Drywall
- Carpet or Padding
- Furniture
- Clothing
- Asbestos containing material - call 608.267.0120 for a permit



NOT ALLOWED

- NO Appliances
- NO Yard waste
- Leaves/Compost
- NO Ballasts/Bulbs
- NO Hazardous/Contaminated Materials

For information on alternative disposal locations, please visit our website.

CONSTRUCTION & DEMOLITION RECYCLING



The Dane County Construction and Demolition (C&D) Recycling Facility accepts C&D debris from waste/recycling haulers, contractors, and commercial/residential customers for recycling. Roll-offs must contain over 50% recyclable material. Loads are weighed in and out at the Dane County Landfill scale house.

HOURS
6:30 am - 3:15 pm M-F
8 am - 10:45 am Sat

LOCATION
Dane County Landfill
7102 Maahic Way
Madison, WI 53718



landfill.danecounty.gov/services/construction



920.319.8118 x 111 or 608.838.9555



BRUSH & LOG DROP OFF

We accept clean logs and branches at our wood yard (see map below) to make wood chips for landscaping, animal bedding, and other uses. We cannot accept yard waste, soil, or other organic debris at this time.



Accepted at wood yard:

- Clean Logs
- Branches/Tree Trimmings (larger than 1/2 inch in diameter)
- Clean Wood Chips



NOT accepted at wood yard:

- Stumps/Stump Grindings
- Yard Waste/Leaves
- Garden Cleanouts/Soil
- Trash/Debris
- Furniture/Treated Wood

PRICING GUIDE

	Clean C&D	Clean Sorted Shingles	Clean Wood	Wood Chips
	<i>Flat Rate</i>			
0500 lbs	\$13.50	\$14.00	\$10.00	\$6.25
5011,000 lbs	\$27.00	\$28.00	\$20.00	\$12.50
10011,500 lbs	\$40.50	\$42.00	\$30.00	\$18.75
15012,000 lbs	\$54.00	\$56.00	\$40.00	\$25.00
	<i>Weight Based Rate</i>			
>2,000 lbs	\$ 54/ton	\$56/ton	\$40/ton	\$25/ton

Tires (without rims) are accepted at \$320/ton. Tires under a ton are \$80.00 per 500 lbs.



Updated: Aug 2024

ABOUT US

Dane County Waste & Renewables is conserving landfill space through an innovative, public-private partnership with Lakeshore Recycling Systems. Renovated in 2016, our Construction & Demolition Recycling Facility sorts and separates over 350 ton of construction and demolition (C&D) materials a day for beneficial reuse and recycling. Visit our website or call below to learn more about our work.

TO LEARN MORE

Arturo Martinez
608.228.3621 AMartinez@LRSrecycles.com

Chand Tubio
608.438.0748
CTubio@LRSrecycle.com

Roxanne Wienkes
Dane County Department of Waste & Renewables
608.509.6681

wienkes.roxanne@danecounty.gov



landfill.danecounty.gov/services/construction



920.319.8118 x 111 or 608.838.9555